

ELECTRICAL
SAFETY
SOLUTIONS



AFTER-SALES SERVICES





AFTER-SALES SERVICES

At Sécheron, we have built our reputation on designing and manufacturing safety components and solutions. All our products are backed by services to help you get the most out of your equipment throughout its service life. We offer maintenance, training, troubleshooting and repair services through a global network of service points to bring you the fast, efficient support you need wherever you are around the globe.

Content

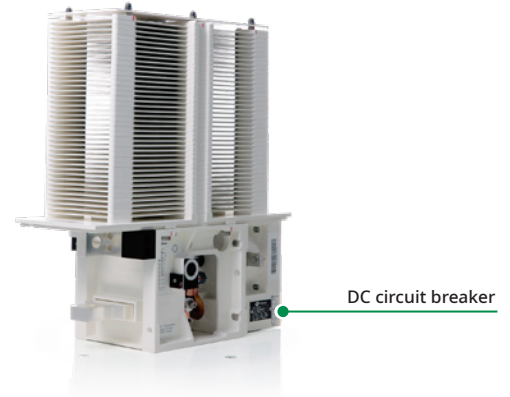
SÉCHERON SAFETY PHILOSOPHY	Pages
Safety related products	3
Original spare parts concept	3
Design to low maintenance	3
 A FULL RANGE OF AFTER-SALES SERVICES	
Preventive maintenance and repair	4
E-learning & training	5
Retrofit & modernization project	5
 ELECTRICAL SAFETY SOLUTIONS SCOPE OF SUPPLY	
Rail Vehicles	6
DC traction substation	7

SÉCHERON SAFETY PHILOSOPHY

SAFETY RELATED PRODUCTS

Our components and equipment supply high power to rail vehicles and other industrial equipment and protect high voltage circuits from electrical faults. Because our solutions play a critical role in protecting people and property, regular preventive maintenance must be performed by specially-trained technicians and engineers using Sécheron's original spare parts.

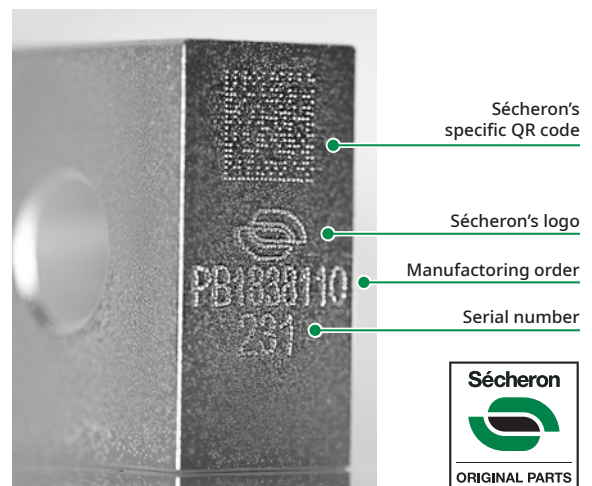
We have developed detailed and accurate operation and maintenance procedures, delivered with your equipment, for regular maintenance and parts replacement




ORIGINAL SPARE PARTS CONCEPT

In order to guarantee the reliability and the performance of Sécheron's safety devices, only Sécheron's original spare parts must be used through the complete product lifetime.

These original parts, manufactured and checked following rigorous processes, are now stamped with the Sécheron's logo and the traceability numbers (manufacturing order and serial number), either on the parts themselves or on their original packaging.



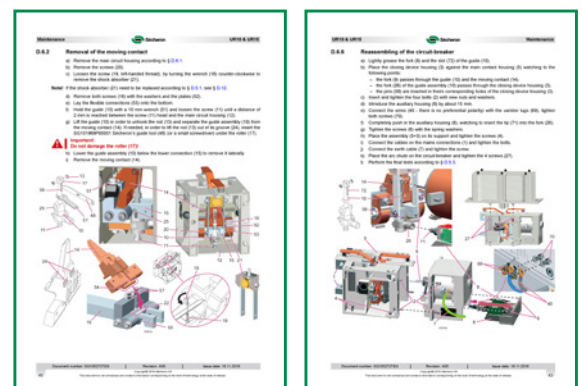
Contact Sécheron or one of our partners:

 www.secheron.com/worldwide
for guaranteed original parts and maintenance services.

DESIGN TO LOW MAINTENANCE

During the development process, Sécheron pays a high attention to designing products and solutions that minimize maintenance requirements while offering easy access to wearing parts.

Our products and solutions undergo intensive factory testing to ensure superior reliability and uptime in service. They are released to the market only once our severe and rigorous testing procedures have been successfully completed. Our maintenance procedures, as described in our operation & maintenance manuals, guarantee the reliability and performances of the components during all their service life.



A FULL RANGE OF AFTER-SALES SERVICES

PREVENTIVE MAINTENANCE AND REPAIR

To guarantee the reliability and both electrical and human safety during all their life cycle, our equipment must be regularly maintained by technicians or engineers who have been specifically trained to perform such preventive maintenance.

PREVENTIVE MAINTENANCE BY SÉCHERON

Our preventive maintenance services can be delivered by our local experts at a Sécheron site or at your facility. Sécheron's local experts for maintenance have been trained on the maintenance and safety procedures applicable to our devices, and they are certified by Sécheron for this activity.

To apply for Sécheron's maintenance service go to:



<https://support.secheron.com>

open a new ticket and select the topic "4 - On-Site Intervention Request".



Sécheron Italia



Sécheron India

PREVENTIVE MAINTENANCE BY OPERATORS

Your maintenance staff can also perform preventive maintenance on our equipment. In this case, we recommend your personnel are trained by Secheron so that they can perform preventive maintenance correctly and safely.

Together with its equipment, Sécheron provides very detailed and precise Operation & Maintenance manuals that guide the operators and maintenance teams on the maintenance intervalls as well as on the procedures to replace worn or damaged parts. Making sure such manuals have been delivered with your equipment is the first action we take.

For this service, check the paragraph:

'E-LEARNING & TRAINING'.

TROUBLESHOOTING & REPAIR

If, for any reason, your Sécheron product is damaged or does not operate as intended, you can send it to Sécheron for troubleshooting and repair as outlined in the RMA (Return Material Authorization) procedure.



Sécheron Hasler UK

To help us provide you with the fastest and most efficient service possible, please follow all instructions in the RMA carefully and be sure to provide all of the necessary documentation.

Once your product is received by Sécheron, either in Geneva or at Sécheron's service center covering your geographical area, we will perform the necessary troubleshooting according to your description of the problem.

To send back damaged material to Sécheron go to:



<https://support.secheron.com>

open a new ticket and select the topic

"3 - (RMA) Return Merchandize Authorization".



E-LEARNING & TRAINING

Sécheron has built a strong reputation not only for reliable, high-performance products, but also for value-added services including training. Whether you integrate, operate, or maintain Sécheron solutions, we have a training program for you.

Our training programs are regularly updated with new information to help you increase your solution's uptime, extend its service life, improve customer service and operational safety, and lower Total

Cost of Ownership (TCO). Training certificates are delivered upon successful completion of a course (i.e., demonstrated mastery of best practices validated by Sécheron).

To apply for a training go to:



<https://support.secheron.com>

open a new ticket and select the topic "5 - Request For Training".

LEVEL 1 E-LEARNING TRAINING

Our Level 1 e-learning training is designed for anytime, anyplace access to content, eliminating travel time and missed work. Learn in a safe, quiet, clean environment away from the noise and pressures of the workplace. E-learning courses are available for most of our products, with comprehensive video tutorials on product maintenance.



LEVEL 2 CLASSROOM TRAINING COURSES

Level 2 classroom training courses are generally scheduled once a year on specific products like our DC circuit breakers, AC circuit breakers, contactors, disconnectors, and more. These courses are held at our headquarters in Geneva or at one of our authorized service centres. We can also offer training at your premises on request. These practical courses are generally delivered with the associated e-learning content.



RETROFIT & MODERNIZATION PROJECT

For old vehicles and installations requiring an overhauling of electric equipment, Sécheron offers comprehensive solutions to replace existing components and sub-systems. Our proposal can include customization of equipment & solutions listed in our scope of supply in order to make an easy integration in your vehicle.

Feel free to contact Sécheron or one of our partners (www.secheron.com/worldwide) so that together we can evaluate your needs and better shape the solution that fits the best to your requirement and environment.



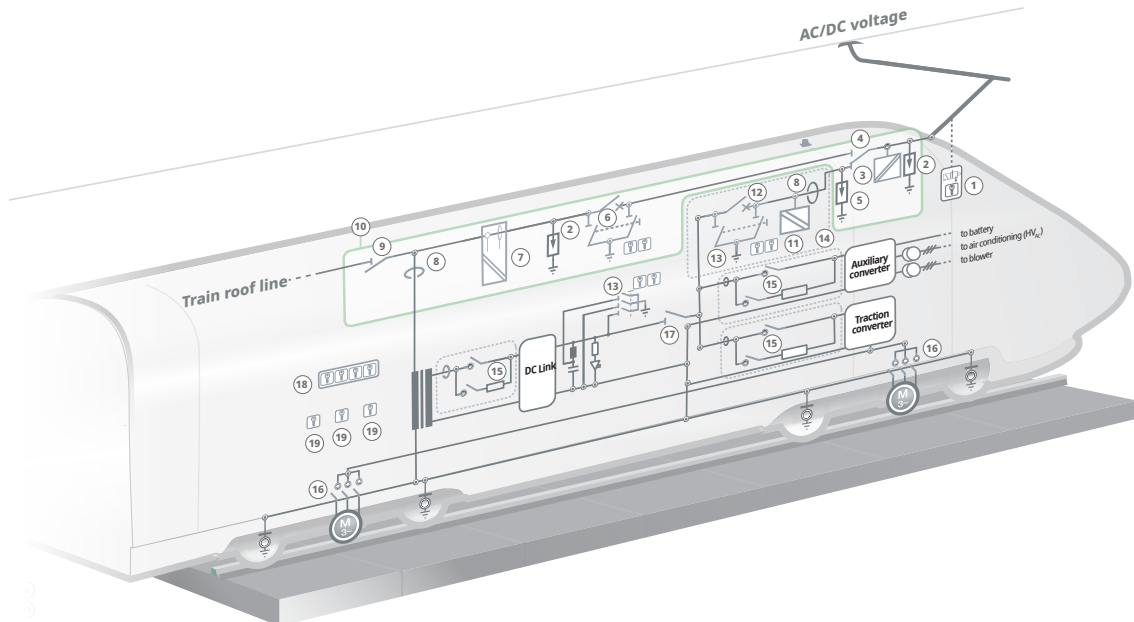
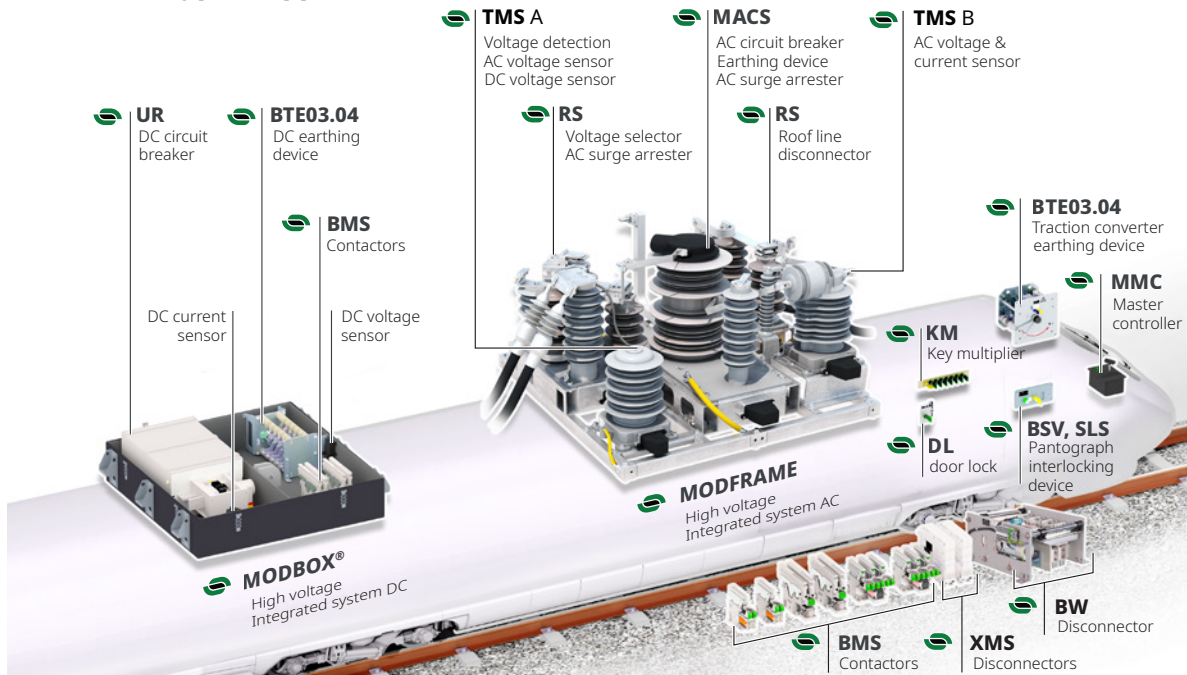
Sécheron's SPL pantograph integrated on an existing tram.

ELECTRICAL SAFETY SOLUTIONS SCOPE OF SUPPLY



RAIL VEHICLES

AC/DC typical application



SAFETY FUNCTIONS

- ① Pantograph interlocking device
- ② AC surge arrester
- ③ DC surge arrester
- ④ AC circuit breaker & earthing device
- ⑩ High voltage integrated system AC
- ⑫ DC circuit breaker
- ⑬ Earthing device
- ⑭ High voltage integrated system DC
- ⑯ Key multiplier
- ⑰ Door lock

BSV, SLS

MACS

MODFRAME

UR

BTE03.04

MODBOX®

KM

DL

SWITCHING FUNCTIONS

- ④ Voltage selector
- ⑨ Roof line disconnecter
- ⑮ Contactors & modules
- ⑰ Permanent magnet synchronous motor isolating contactor
- ⑱ Disconnector

RS
RS, IS
BMS, SEC,
PCC, HS, PCM
BMS

XMS

MEASUREMENT FUNCTIONS

- ③ AC & DC voltage sensor, voltage detection
- ⑦ AC voltage & current sensor
- ⑧ Current sensor (AC or DC)
- ⑪ DC voltage sensor

TMS

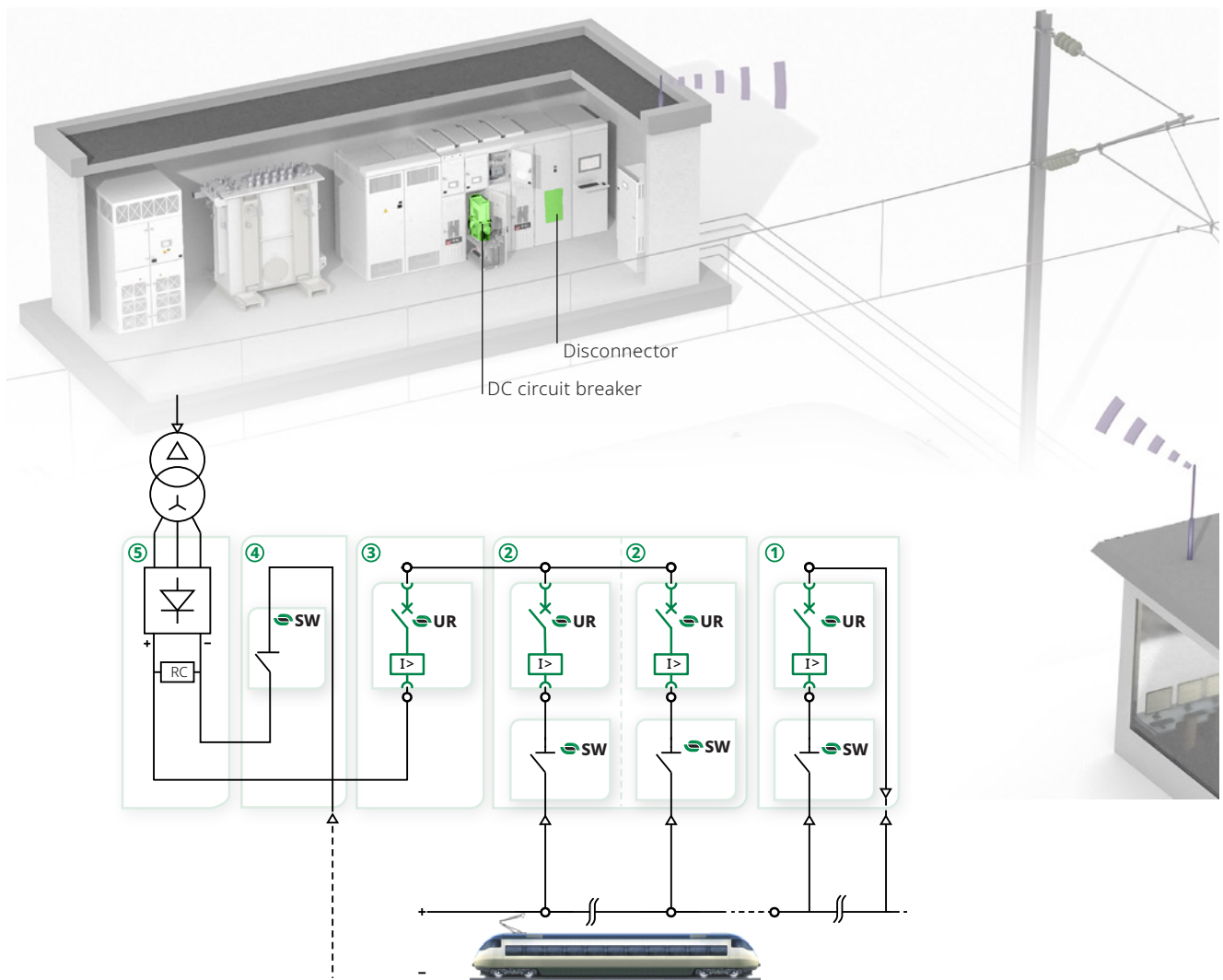
TMS

DC RAIL TRANSPORTATION



DC TRACTION SUBSTATION

DC typical application



- | | | | |
|--|-----------|--|-----------|
| ① Rectifier breaker panel
DC High-speed circuit breaker | UR | ④ Rectifier negative panel
Disconnecter | SW |
| ② Line breaker panel
DC High-speed circuit breaker | UR | ⑤ Rectifier | |
| ③ Interconnecting breaker panel
DC High-speed circuit breaker | UR | | |

SÉCHERON'S WORLDWIDE NETWORK

SÉCHERON'S OWN SERVICE POINTS

EUROPE

Czech Republic, Slovakia

📍 **Sécheron Hasler CZ, spol. s r.o.**
Podnikatelská 556
190 11 Praha 9 - Czech Republic
+420 271 088 111
service.ess.czech@secheron.com

Germany, Austria, Netherlands, Poland

📍 **Sécheron Hasler GmbH**
Max-Holder-Straße 41
60437 Frankfurt am Main - Germany
+49 69 506086130
service.ess.germany@secheron.com

Great Britain, Ireland

📍 **Sécheron Hasler UK Ltd.**
Unit A2, Brookside Business Park,
Greengate, Middleton - M24 1GS
Manchester - United Kingdom
+44 161 655 6610
service.ess.uk@secheron.com

Italy, Malta

📍 **Sécheron Hasler Italia S.r.l.**
Linate Business Park, Via Rivoltana 35
20096 Pioltello - MI - Italy
+39 02 92162 590
service.ess.italia@secheron.com

Spain, Portugal, Andorra

📍 **Sécheron Hasler Ibérica, S.L.**
Calle Calidad 42
Polígono Industrial Los Olivos
28906 Getafe - Madrid - Spain
+34 91 620 79 58
service.ess.spain@secheron.com

EUROPE

Switzerland & rest of the world

📍 **Sécheron SA (Switzerland)**
Rue du Pré-Bouvier 25
1242 Satigny - Geneva - Switzerland
+41 22 739 41 11
service.ess@secheron.com

ASIA

China

📍 **Sécheron (China) Co. Ltd.**
Section B, 1F Building 1,
111 Shennan Road,
Xinzhuang Industrial Park - 201108
Shanghai - China
+86 21 6442 2900
service.ess.china@secheron.com

India, Bangladesh, Nepal, Pakistan, Sri Lanka

📍 **Sécheron Hasler (India) Private Ltd.**
17-C, Udyog Vihar, Phase V.
122 016 Gurgaon - India
+91 124 4141 714
service.ess.india@secheron.com

Japan

📍 **Sécheron Hasler Japan Co. Ltd**
4004-6, Kamimizo, Chuo-ku,
Sagamihara-city - 252-0243,
kanagawa - Japan
+81 80 5890 3732
service.ess.japan@secheron.com

AMERICAS

Brazil

📍 **Sécheron Hasler do Brasil**
Rua João Anes, 90
05060-020 Alto da Lapa
São Paulo - SP - Brazil
+55 11 3714 6026
service.ess.brazil@secheron.com

SÉCHERON'S PARTNER SERVICE POINTS

EUROPE

Scandinavia

📍 **Dahlrair**
Østensjøveien 15D
0661 Oslo, Norway
+47 23 17 37 98
service.ess.scandinavia@secheron.com

ASIA

Singapore

📍 **Precision Technologies Pte Ltd**
Block 211 Henderson Road
#13-02 Henderson Industrial Park
Singapore 159552
+65 6273 4573
service.ess.south-east-asia@secheron.com

South Korea

📍 **SEMS International Co Ltd**
209, Yeoksam Venturetel
642-1, Yeoksam-Dong,
Gangnam-Gu Seoul,
Korea Secheron
+82-2-2192-3773
service.ess.south-korea@secheron.com

Turkey

📍 **DeSA Representation & Consultancy & Engineering Ltd**
Hafta Sokak No 23/3
06700 G.O.P. Cankaya
Ankara - Turkey
+90 312 439 8 380
service.ess.turkey@secheron.com

AUSTRALIA

Australia, New Zealand

📍 **Imtram Pty Ltd**
37 Bond Street
Ringwood, VIC 3134 - Australia
+61 3 9879 5200
service.ess.australia@secheron.com

AMERICAS

South America Spanish-speaking

📍 **TyD Electrica srl**
Mendoza 5220 1P
(1431 CIP) CABA R. Argentina
+54 11 4587-2007
service.ess.south-america@secheron.com

United States, Canada, Puerto Rico

📍 **ARM CAMCO LLC**
667 Industrial Park Road
Ebensburg, PA 15931 - USA
service.ess.north-america@secheron.com

AFRICA

Subequatorial Africa

📍 **ADS Engineering cc**
13-15 Rembrandt Street
Petervale, Bryanston, 2151. ZA
South Africa
+27 11 803 05 70
service.ess.south-africa@secheron.com



SÉCHERON'S SALES POINTS

www.secheron.com/worldwide/

www.secheron.com

Copyright© • 2024 • Sécheron SA

This document is not contractual and contains information corresponding to the level of technology at the date of printing. Sécheron reserves the right to modify and/or improve the product, whose characteristics are described in these documents, as required by new technology at any time. It is the purchaser's responsibility to inform himself, no matter what the circumstances, of the product's maintenance conditions and requirements. Sécheron reserves all rights, especially those arising from our "General Delivery Conditions".



Sécheron Hasler GROUP
Smart. Safe. Swiss.